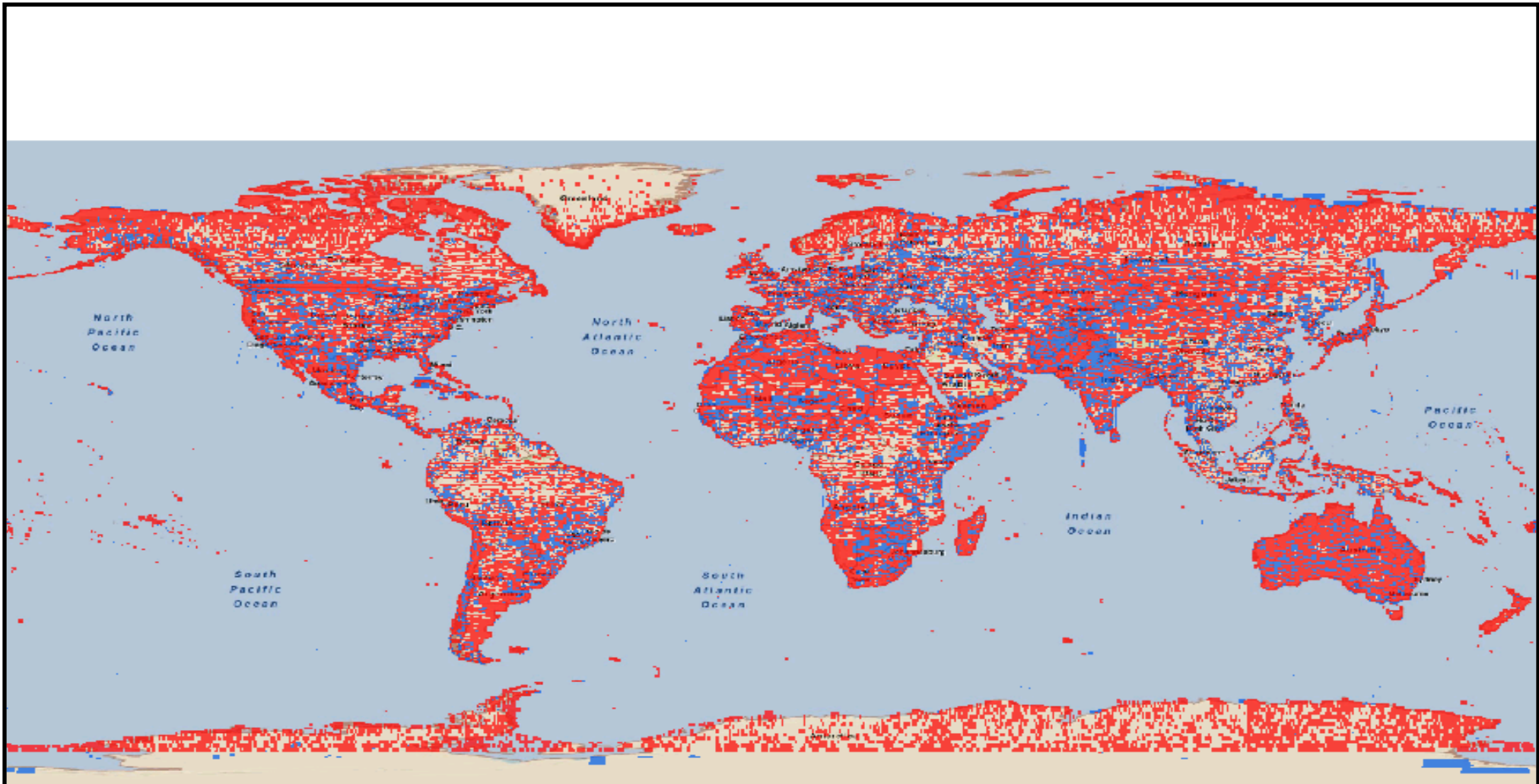


GeoEye Commercial Imagery Archive Holdings



This map does not represent a legal survey of the land and is intended for graphical purposes only. Use of this Map and Data for any purposes should be with acknowledgment of the limitations of the Data including the fact that the imagery data is dynamic and is in a constant state of maintenance, correction, and update.

Collection Vehicle
■ GEOEYE-1
■ IKONOS-2



GeoFUSE- Sum SQKM by Collection Vehicle

| Collection Vehicle | Collection Year | Count of Source Images | Count of Scenes | Total SQKM | Count of Source Images LE 20 % | Count of Scenes LE 20% | Total SQKM LE 20% | Count of Source Images LE 10 % | Count of Scenes LE 10% | Total SQKM LE 10% |
|--------------------|-----------------|------------------------|------------------|--------------------|--------------------------------|------------------------|--------------------|--------------------------------|------------------------|--------------------|
| GE-1 | GE-1 2009 | 67,697 | 326,404 | 89,093,440 | 38,573 | 159,499 | 43,076,078 | 34,723 | 142,411 | 38,473,976 |
| | GE-1 2010 | 80,437 | 399,246 | 109,413,098 | 46,506 | 197,374 | 53,241,991 | 42,179 | 177,609 | 47,888,194 |
| | GE-1 2011 | 105,130 | 462,802 | 120,195,098 | 53,936 | 201,748 | 52,314,091 | 48,532 | 179,005 | 46,363,781 |
| | GE-1 2012 | 10,906 | 46,564 | 12,202,659 | 5,701 | 20,900 | 5,440,023 | 5,204 | 18,763 | 4,872,831 |
| Total | | 264,170 | 1,235,016 | 330,904,295 | 144,716 | 579,521 | 154,072,183 | 130,638 | 517,788 | 137,598,782 |
| IK-2 | IK-2 1999 | 411 | 1,990 | 321,068 | 252 | 983 | 155,412 | 231 | 893 | 140,865 |
| | IK-2 2000 | 24,605 | 98,906 | 15,855,458 | 15,868 | 53,820 | 8,593,851 | 14,037 | 47,917 | 7,650,746 |
| | IK-2 2001 | 37,172 | 181,733 | 28,548,221 | 25,106 | 101,197 | 15,937,013 | 22,005 | 89,149 | 14,050,516 |
| | IK-2 2002 | 36,360 | 214,959 | 34,830,379 | 26,650 | 128,892 | 20,853,795 | 23,563 | 114,815 | 18,576,568 |
| | IK-2 2003 | 33,420 | 202,913 | 33,031,968 | 25,236 | 127,074 | 20,728,146 | 22,467 | 114,352 | 18,676,540 |
| | IK-2 2004 | 26,060 | 81,298 | 13,405,014 | 12,100 | 32,422 | 5,328,196 | 10,303 | 28,035 | 4,605,557 |
| | IK-2 2005 | 36,945 | 124,098 | 20,702,630 | 14,379 | 47,954 | 8,171,104 | 12,477 | 42,393 | 7,247,957 |
| | IK-2 2006 | 40,499 | 146,619 | 24,107,482 | 16,988 | 60,448 | 10,149,069 | 14,840 | 53,513 | 9,017,683 |
| | IK-2 2007 | 37,790 | 166,638 | 27,606,321 | 20,428 | 90,985 | 15,229,891 | 18,545 | 83,456 | 13,992,442 |
| | IK-2 2008 | 35,218 | 135,178 | 22,170,898 | 18,051 | 72,303 | 12,067,598 | 16,191 | 65,868 | 11,017,292 |
| | IK-2 2009 | 39,544 | 124,574 | 20,412,362 | 18,414 | 56,474 | 9,444,551 | 16,012 | 50,036 | 8,398,151 |
| | IK-2 2010 | 41,532 | 136,876 | 22,299,135 | 18,458 | 59,537 | 9,914,618 | 16,289 | 52,985 | 8,848,133 |
| | IK-2 2011 | 47,231 | 185,535 | 30,941,644 | 27,488 | 98,869 | 16,493,401 | 24,851 | 88,893 | 14,823,355 |
| | IK-2 2012 | 3,998 | 18,688 | 3,282,327 | 2,339 | 9,661 | 1,685,987 | 2,160 | 8,902 | 1,552,161 |
| Total | | 440,785 | 1,820,005 | 297,514,907 | 241,757 | 940,619 | 154,752,632 | 213,971 | 841,207 | 138,597,966 |

Grand Total **628,419,202.00** **308,824,815** **276,196,748**